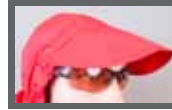
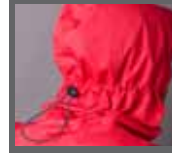


FULAP

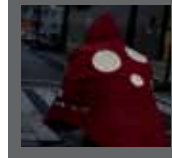
Rain protection



• Big Protection cap



• Double hood setting : front and rear (Eyes level) Perfect fitting on every head specially when looking on the sides !



• Large High visibility reflective printings (sides and Back)
• waterproof, breathable polyester fabrics
• Seamtaped waterproof stitching
• Water repellent coating (Instant drying/Quick folding)



• Lightweight <300gr
• Can be fixed under every seat without any tools needing
• locking system



• One size fits all, KDS réglable
• Colors : Black, Red light

KDS System (Patented System)
Top wind tenue
Maximum protection for legs and back



15 pieces Recycled carton Display-pack



contact@spaddeville.com - www.spaddeville.com
- registered model and trademark -

